

UALASAHA[®]

UA LOGS

**WHERE
WOOD
BECOMES
SMART**

OUR SCOPE AND COMPANIES

CREATING A RELIABLE GLOBAL NETWORK

VALASAHA Group is a global trading and solution providing company in forestry and wood sector with focus on sustainability and innovative approach. Our roots are in Europe but we are active on an international scale, with 5 subsidiaries led by local professionals who are focused on

sustainable sourcing of selected wood species and products. We are creating a valuable network of forest owners, harvesting companies, mills, and producers who altogether build up a world of endless solutions in areas of forestry, woodworking and trade.



Tarwinn

Serbia
Slovenia
Croatia



Waltors

South Africa



VALASAHA Hong Kong

Asian branch

OUR VISION

We see wood as a material of the future. Renewable, recyclable, emission-reducing, and of a great value to the whole society. Our aim is to create a wood value chain where all our products and related solutions are SMART:

WHERE WOOD BECOMES

S M A R T



SUSTAINABLE

Sustainability takes the first place in VALASAHA philosophy. We want to preserve our natural resources for the next generations and to promote the usage of sustainable wood products and their benefits. Being a part of the FSC® and PEFC chain of custody certifications, we are happy to participate in the system which takes proper care of the forests and secures the wellbeing of the whole habitat.



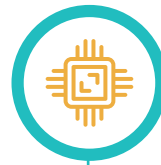
ALL-ROUND

We are focused on solutions and for our partners we are willing to go the extra mile. Being a part of a holding group allows us to achieve synergies and to offer complex, time- and cost saving solutions. From sustainable harvesting through optimized transport and professional fumigation and treatment, we can supply wood to serve its purpose as effectively as possible.



TECHNOLOGICALLY ADVANCED

Enhancing the traditional with innovation and progress. We combine our know-how and partner network with modern technology and tools that increase effectivity and contribute to a long-term growth. Thanks to many years of experience in various fields from forestry, through processing, to the export of final products, we have learned all the pitfalls and now our aim is to help the industry to tackle the progress-related issues.



MADE-FOR-LIFE

the perfect material because it is made for life in its core. It practically lives and ages with us, whilst creating a patina as part of its character. Understanding its value and with our experience and devotion, we are trying to find the right usage for each piece of wood in order to prolong its life cycle and make sure that none gets wasted.

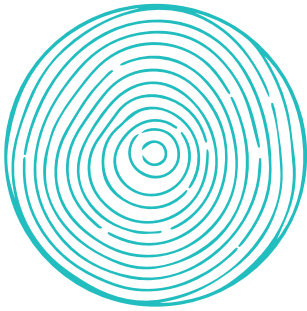
RELIABLE

Given our heritage and professional history, we pride ourselves on having a culture based on respect and fair, lasting relationships. By creating a trusting network of experts in the forestry and wood sector, we can move the industry forward by working together in a reliable and sustainable manner.

OUR PRODUCTS

VALASAHA supplies a wide range of products including roundwood, sawn and structural timber, packaging timber, veneer and wood-based panels. By continuously extending our partner base and

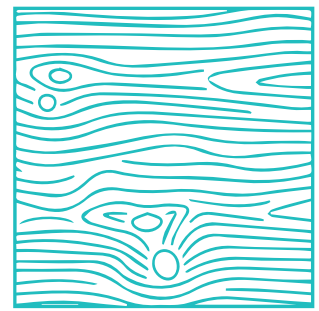
maintaining our own harvesting, we offer many types of sustainably sourced softwoods and hardwoods as well as exotics.



UA LOGS



UA LUMBER



UA PANELS

CONTRIBUTION TO SUSTAINABILITY

As a responsible company, we try to maximize wood's social, economic, and environmental value both now and for future generations. We work constantly to improve our business processes to minimize our own environmental impact. We support a green world economy, the alignment of the economic growth with the demands of environmental protection, and the creation of a new sustainable social model which is changing the global position of forestry.

VALASAHA and its two subsidiaries – Tilian and Millwood are proud holders of the FSC® certification, declaring that the forests, harvested wood, and subsequent products that we work with are grown and processed sustainably and from proven sources.





FSC®

FSC® is a globally recognized certificate guaranteeing the sustainability of fragile forest ecosystems. Today more and more companies are considering responsible forest management, which must preserve biodiversity and its associated values, water resources, soil, and unique and sensitive ecosystems and landscape features, thereby maintaining the forest's ecological functions and integrity, and VALASAHA is no exception.

We work in accordance with Forest Stewardship Council® standards (FSC-C157694). This certificate guarantees that the wood we supply has not been harvested illegally, and comes from forests managed in a close-to-nature manner. The FSC® certificate also ensures a fair wage, job security, and opportunities for educating people who work in the forest and in product processing. Regular audits by independent accredited certification organizations serve to guarantee the right to present this international certificate.



The mark of responsible forestry

PEFC

PEFC is the world's largest forest certification system. PEFC, through the promotion of sustainable forest management, ensures throughout the forest product supply chain that timber and non-timber forest products are produced in compliance with the highest environmental, social, and ethical standards. Thanks to the eco-label, customers and consumers can identify products from sustainable forests. The PEFC Consumer Chain of Custody (CoC) certification, which we use at VALASAHA, is a mechanism for tracking certified materials from forest to the finished products, which ensures that wood, wood fibers and nonwood forest products contained in products can be traced back to certified forest. C-o-C certification is an important part of the PEFC system, as it ensures that forest product declarations are credible and verifiable throughout the supply chain. C-o-C certification is used to certify the entire value chain of forest products.





Supplying quality roundwood to Europe and overseas

VALASAHA supplies a wide range of roundwood, sawlogs and pulp logs to sawmills, wood-based panel plants, and paper mills all over the world. Our team has extensive woodworking industry knowledge, which is key for supplying the right material for production. Thanks to our local professionals, we know the possibilities in their regions, the quality of growing trees, and their proper utilization. By continuously extending our partner base and maintaining our own harvesting,

we supply many types of sustainably sourced softwoods and hardwoods.

Our portfolio includes European species such as Spruce, Pine, Oak, Beech, Ash, Poplar, Birch and Maple which we source directly from landowners or from our own harvesting operations in Europe, as well as overseas species such as Elliotis Pine, Patula Pine and Eucalyptus.

SOFTWOODS

Spruce

BOTANICAL NAME: PICEA ABIES		DIAMETER	LENGTH
Quality 1	ABC fresh / calamity sawlogs	25cm+	11,8m (Free Trim 0,3m) 5,9m (Free Trim 0,2m)
Quality 2	Pallet production	20cm+ 15cm+	5,9m (Free Trim 0,2m) 2,5m

Pine

BOTANICAL NAME: PINUS SYLVESTRIS		DIAMETER	LENGTH
Quality 1	ABC fresh / calamity sawlogs	25cm+	11,8m (Free Trim 0,3m) 5,9m (Free Trim 0,2m)
Quality 2	Pallet production	20cm+	2,5m 5,0m

HARDWOODS

Beech

BOTANICAL NAME: FAGUS SYLVATICA		DIAMETER	LENGTH
Quality 1	Sawlogs I (30% Red Heart) Sawlogs I (30% Red Heart)	40-49cm 50cm+	3,2-11,8m (Free Trim 0,3m) 3,2-11,8m (Free Trim 0,3m)
Quality 2	Peeler logs II (70% Red Heart) Peeler logs II (70% Red Heart)	40-49cm 50cm+	3,2-11,8m (Free Trim 0,3m) 3,2-11,8m (Free Trim 0,3m)
Quality 3	Sawlogs III (30% Red Heart)	30-39cm	3,2-11,8m (Free Trim 0,3m)
Quality 4	Peeler logs IV (70% Red Heart)	30-39cm	3,2-11,8m (Free Trim 0,3m)

Oak

BOTANICAL NAME: QUERCUS PETRAEA / ROBUR		DIAMETER	LENGTH
Quality 1	Pulp	8-100cm	2,0-4,0m
Quality 2	ABC mix quality	20-29cm	3,2-11,8m
Quality 3	D (unlimited knots)	30-39cm 40cm +	3,2-11,8m
Quality 4	C (1 knot per 2m)	30-39cm 40cm+	2,2-11,8m
Quality 5	AB (2-3 knots per piece, min. 2.6m apart)	27-29cm 30-39cm 40cm +	3,2-11,8m
Quality 6	Veneer	40-49cm 50cm +	2,0-4,0m

Ash

BOTANICAL NAME: FRAXINUS EXCELSIOR		DIAMETER	LENGTH
Quality 1	AB	50cm + 40-49cm 30-39cm 25-29cm	3,2-11,8m (Free Trim 0,1m)
Quality 2	C	50cm + 40-49cm 30-39cm 25-29cm	3,2-11,8m (Free Trim 0,1m)

Other species

EUROPEAN BOTANICAL NAME:	US EXCELSIOR	US EXCELSIORV	US EXCELSIOR
Poplar	Populus Tremula	Elliotis Pine	Pinus Elliottii
Birch	Betula Pendula	Patula Pine	Pinus Patula
Maple	Acer Pseudoplatanus	Eucalyptus	Eucalyptus spp.



VALASAHA®

UA LOGS

info@valasaha.com
www.valasaha.com

