



**UALASAHA<sup>®</sup>**

**UA** PANELS

**WHERE  
WOOD  
BECOMES  
SMART**

# OUR SCOPE AND COMPANIES

## CREATING A RELIABLE GLOBAL NETWORK

VALASAHA Group is a global trading and solution providing company in forestry and wood sector with focus on sustainability and innovative approach. Our roots are in Europe but we are active on an international scale, with 5 subsidiaries led by local professionals who are focused on

sustainable sourcing of selected wood species and products. We are creating a valuable network of forest owners, harvesting companies, mills, and producers who altogether build up a world of endless solutions in areas of forestry, woodworking and trade.



### Tarwinn

Serbia  
Slovenia  
Croatia



### Waltors

South Africa



### VALASAHA Hong Kong

Asian branch

# OUR VISION

We see wood as a material of the future. Renewable, recyclable, emission-reducing, and of a great value to the whole society. Our aim is to create a wood value chain where all our products and related solutions are SMART:

# WHERE WOOD BECOMES

# S M A R T



## SUSTAINABLE

Sustainability takes the first place in VALASAHA philosophy. We want to preserve our natural resources for the next generations and to promote the usage of sustainable wood products and their benefits. Being a part of the FSC® and PEFC chain of custody certifications, we are happy to participate in the system which takes proper care of the forests and secures the wellbeing of the whole habitat.



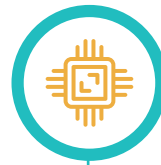
## ALL-ROUND

We are focused on solutions and for our partners we are willing to go the extra mile. Being a part of a holding group allows us to achieve synergies and to offer complex, time- and cost saving solutions. From sustainable harvesting through optimized transport and professional fumigation and treatment, we can supply wood to serve its purpose as effectively as possible.



## TECHNOLOGICALLY ADVANCED

Enhancing the traditional with innovation and progress. We combine our know-how and partner network with modern technology and tools that increase effectivity and contribute to a long-term growth. Thanks to many years of experience in various fields from forestry, through processing, to the export of final products, we have learned all the pitfalls and now our aim is to help the industry to tackle the progress-related issues.



## MADE-FOR-LIFE

the perfect material because it is made for life in its core. It practically lives and ages with us, whilst creating a patina as part of its character. Understanding its value and with our experience and devotion, we are trying to find the right usage for each piece of wood in order to prolong its life cycle and make sure that none gets wasted.

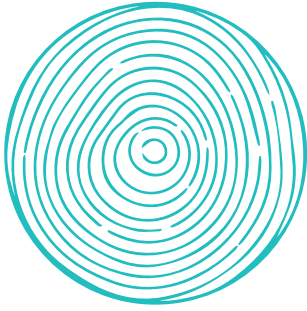
## RELIABLE

Given our heritage and professional history, we pride ourselves on having a culture based on respect and fair, lasting relationships. By creating a trusting network of experts in the forestry and wood sector, we can move the industry forward by working together in a reliable and sustainable manner.

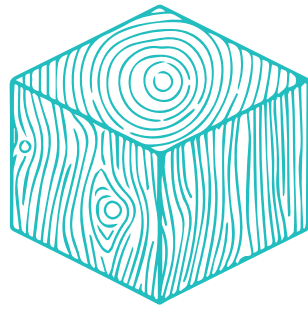
## OUR PRODUCTS

VALASAHA supplies a wide range of products including roundwood, sawn and structural timber, packaging timber, veneer and wood-based panels. By continuously extending our partner base and

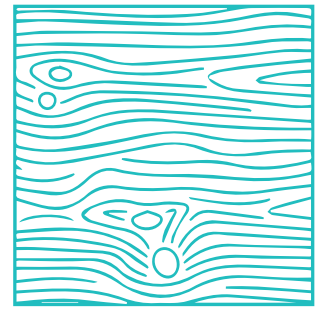
maintaining our own harvesting, we offer many types of sustainably sourced softwoods and hardwoods as well as exotics.



**UA LOGS**



**UA LUMBER**



**UA PANELS**

## CONTRIBUTION TO SUSTAINABILITY

As a responsible company, we try to maximize wood's social, economic, and environmental value both now and for future generations. We work constantly to improve our business processes to minimize our own environmental impact. We support a green world economy, the alignment of the economic growth with the demands of environmental protection, and the creation of a new sustainable social model which is changing the global position of forestry.

VALASAHA and its two subsidiaries – Tilian and Millwood are proud holders of the FSC® certification, declaring that the forests, harvested wood, and subsequent products that we work with are grown and processed sustainably and from proven sources.





### FSC®

FSC® is a globally recognized certificate guaranteeing the sustainability of fragile forest ecosystems. Today more and more companies are considering responsible forest management, which must preserve biodiversity and its associated values, water resources, soil, and unique and sensitive ecosystems and landscape features, thereby maintaining the forest's ecological functions and integrity, and VALASAHA is no exception.

We work in accordance with Forest Stewardship Council® standards (FSC-C157694). This certificate guarantees that the wood we supply has not been harvested illegally, and comes from forests managed in a close-to-nature manner. The FSC® certificate also ensures a fair wage, job security, and opportunities for educating people who work in the forest and in product processing. Regular audits by independent accredited certification organizations serve to guarantee the right to present this international certificate.



The mark of responsible forestry

### PEFC

PEFC is the world's largest forest certification system. PEFC, through the promotion of sustainable forest management, ensures throughout the forest product supply chain that timber and non-timber forest products are produced in compliance with the highest environmental, social, and ethical standards. Thanks to the eco-label, customers and consumers can identify products from sustainable forests. The PEFC Consumer Chain of Custody (CoC) certification, which we use at VALASAHA, is a mechanism for tracking certified materials from forest to the finished products, which ensures that wood, wood fibers and nonwood forest products contained in products can be traced back to certified forest. C-o-C certification is an important part of the PEFC system, as it ensures that forest product declarations are credible and verifiable throughout the supply chain. C-o-C certification is used to certify the entire value chain of forest products.





## Supplying quality roundwood to Europe and overseas

Having in our team specialists on veneer and wood-based panels enables us to supply high-class material of many species and qualities, manufactured globally by renowned producers.

We have travelled across the world to find the best solutions for our clients in terms of quality and pricing, and we are glad that we can rely on our well-built supplier network.

## PANELS

### Plywood

SPECIES	QUALITY	SPECIFICATION
Birch	Raw: B/BB/CP/C Film-faced/wire mesh/hexa/etc. Asian film-faced European raw (furniture & packaging)	Interior/Exterior
European Spruce South American Pine West African Produced	Standard plywood specification	
Poplar	Asian film-faced European raw (furniture & packaging)	
Eucalyptus	Hardwood combi (raw and film-faced)	

## Solid panels

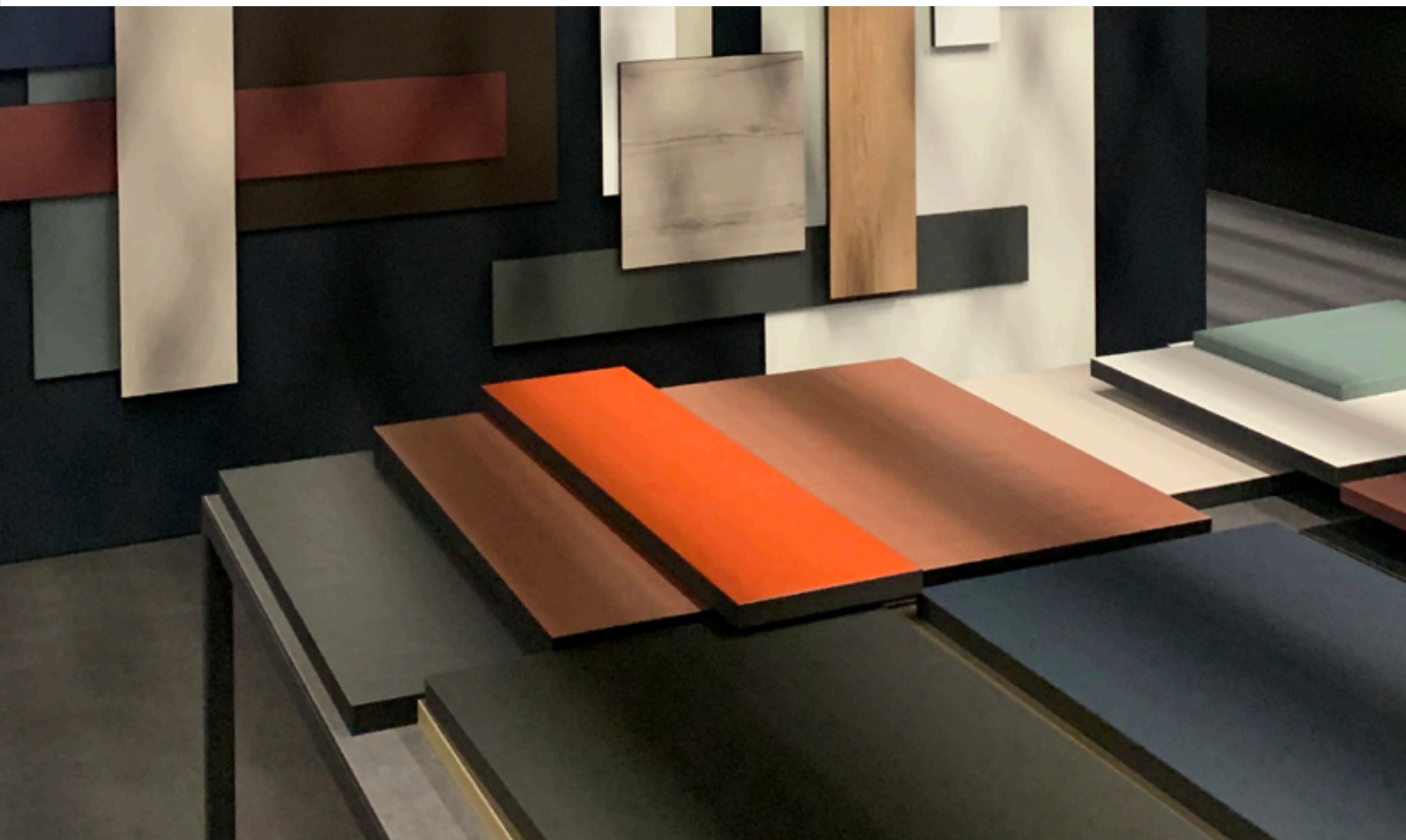
SPECIES	QUALITY	SPECIFICATION
Oak	Interior/Exterior	Interior/ Exterior
Beech	Whole lamella	
Ash	Finger jointed	

## OSB

OSB-3 / OSB-4	
Thickness (mm)	9, 10, 11, 12, 14, 15, 18, 22
Length (mm)	1250, 2390, 2400, 2440, 2500, 2800
Width (mm)	625, 675, 1196, 1197, 1200, 1220, 1250

## VENEER

ROTARY CUT VENEER	SLICED VENEER
Okoume	Oak
Birch	Beech
Spruce	Ash
Eucalyptus	US hardwoods





**VALASAHA®**

**UA PANELS**

[info@valasaha.com](mailto:info@valasaha.com)  
[www.valasaha.com](http://www.valasaha.com)

